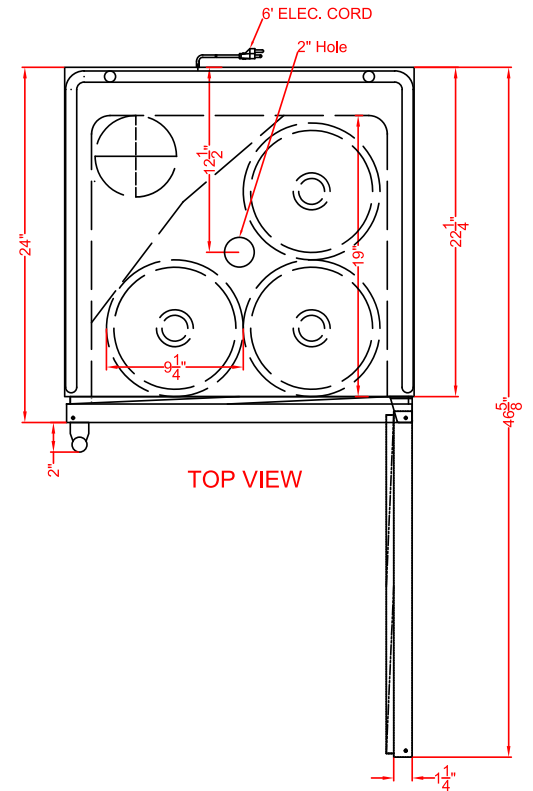


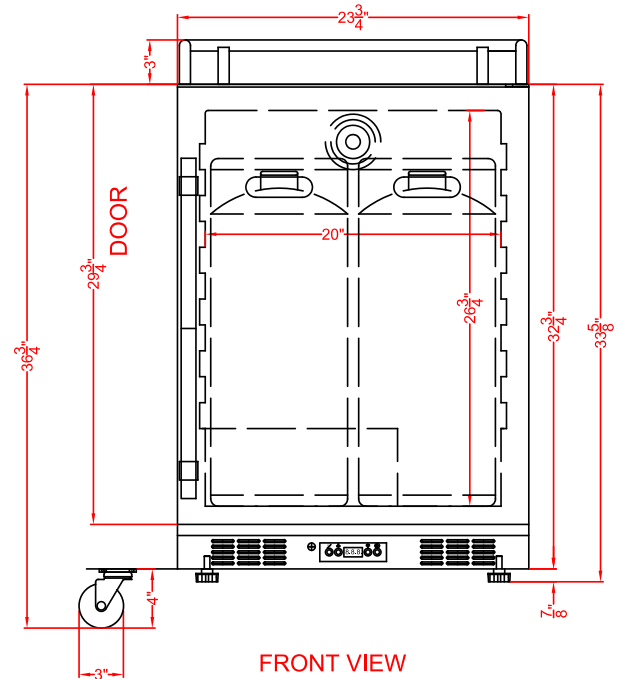


Dimensions:

33.63" x 23.75" x 24" (H x W x D)



TOP VIEW



FRONT VIEW

Description:

24" wide, built-in kegerator, approved for commercial, residential, indoor, and outdoor use, with SS cabinet and door, digital controls, and a set of 4 casters Highlights: ETL-S listed to NSF-7 standard and meets UL-471 for use in commercial settings Meets residential guidelines for home wet bars and similar spaces Designed for built-in installation under the counter

Highlights:

ETL-S listed to NSF-7 standard and meets UL-471 for use in commercial settings
Meets residential guidelines for home wet bars and similar spaces
Designed for built-in installation under the counter

Specification:

Overview

Nominal Height	34.0" (86 cm)
Height of Cabinet	33.63" (85 cm)
Nominal Width	24.0" (61 cm)
Width	23.75" (60 cm)
Nominal Depth	24.0" (61 cm)
Depth	24.0" (61 cm)
Depth with Handle	26.25" (67 cm)
Depth with door at 90°	46.75" (119 cm)
Capacity	5.6 cu.ft. (159 L)
Defrost Type	Automatic
Door	Stainless Steel
Cabinet	Stainless Steel
US Electrical Safety	ETL
Canadian Electrical Safety	ETL-C
Sanitation	ETL-S
Energy Usage/Year	305.0kWh/year
Amps	1.25
Voltage/Frequency	115 V AC/60 Hz
Weight	120.0 lbs. (54 kg)
Parts & Labor Warranty	1 Year
Compressor Warranty	5 Years
UPC	761101075471

Kegerator

Door Swing	RHD
Reversible	Yes
Adjustable Shelves	Yes
Shelf Type	Chrome
Shelf Qty	2
Thermostat Type	Digital
Fan Type	Interior
Refrigerant	R600a
Refrigerant Amount	1.06 oz.
High Side PSI	150.0
Low Side PSI	50.0
Level Legs Qty	4
Wheel Qty	4
Temperature Range	34°F to 68°F (1°C to 20°C)
Sound Level	34.0 db

Product Features:

Large capacity kegerator	5.6 cu.ft. interior can accept a full half barrel keg, two slim quarter kegs, or up to three sixth barrel or Cornelius style kegs; compatible with beer, wine, coffee, or nitro coffee tap systems
Commercially approved	ETL-S listed to NSF-7 standard and meets UL-471 for use in commercial settings
Weatherproof design	Solid 304 grade stainless steel construction allows placement in the outdoors
Built-in capable	Front-breathing design allows fully recessed installation under counters
Automatic defrost	Reduced user maintenance with auto defrost operation
Digital thermostat	Electronic controls ensure easy temperature management, with an external readout in Celsius or Fahrenheit
Tap cool system	Keeps cold air flowing to the tower for consistently cold beer
Stainless steel floor cover	Interior includes steel cover to protect the floor when loading kegs
Top guard rail (ships unassembled)	Attractive chrome guard rail helps to reduce spills and neaten service