

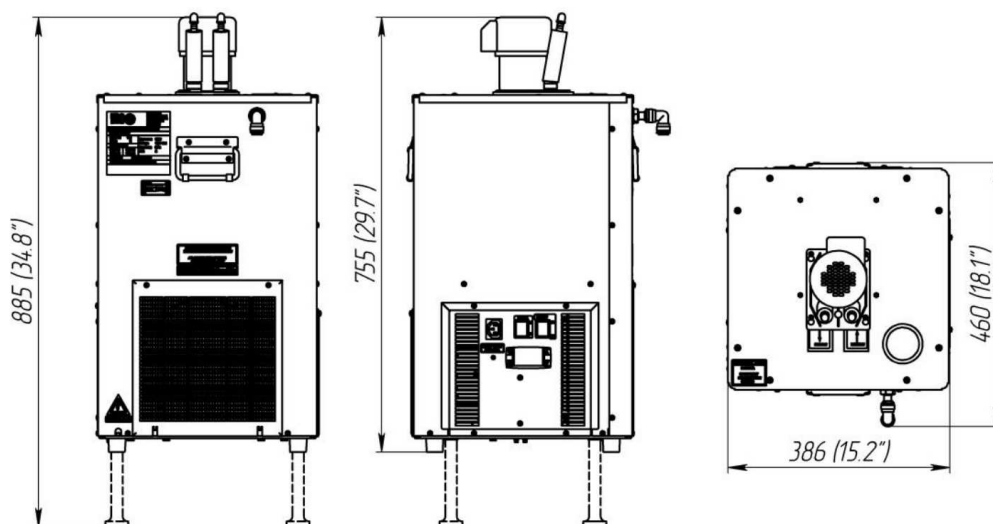
Glycol Chiller **Tayfun H-75G-VP**

SPECIFICATIONS

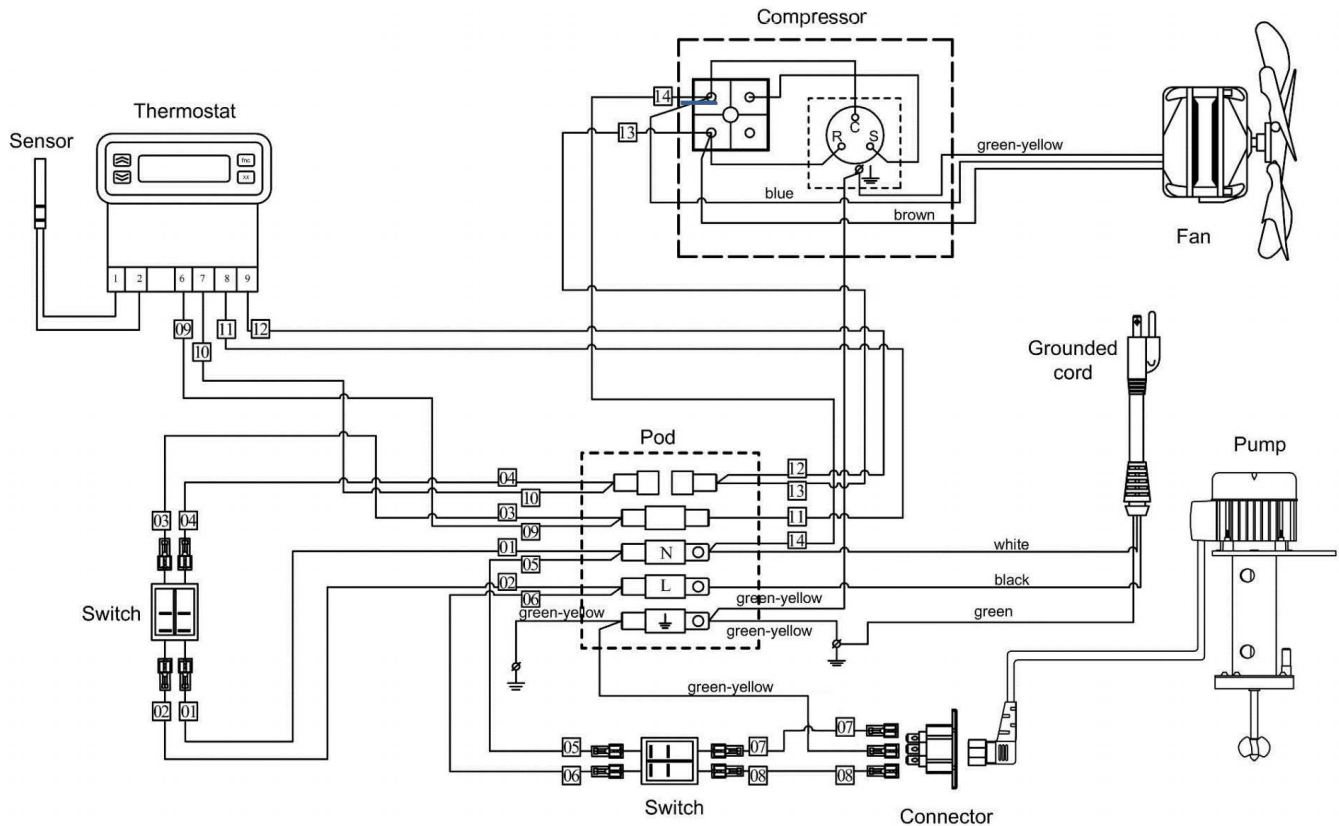


INTERNAL NUMBER		147.00.000.00-01
PART NUMBER		H75G-3/8VP
MAXIMUM DISTANCE	ft	UP TO 75
CAPACITY	BTU/h, evap 20°F	3200
GLYCOL TANK CAPACITY	gal	5.5
COMPRESSOR POWER	HP	3/8
DEDICATED CIRCUIT	amp	15
PLUG TYPE (NEMA #)		5-15P
VOLTAGE / FREQUENCY	V / Hz	115 / 60
PUMP TYPE		VERTICAL
PUMP	GPH	4
NUMBER OF PRE-INSTALLED PUMPS		1
NUMBER OF ADDITIONAL PUMPS		N/A
REFRIGERANT		R134A
WIDTH	in	15.2
DEPTH	in	18.1
HEIGHT	in	29.7 / 34.8 (ON LEGS)
WEIGHT GROSS/NET	lb	93 / 82
POWER CORD LENGTH	ft	6
INLET/OUTLET BARB	in	3/8
OPERATING AMBIENT TEMPERATURE	°F	60-90
CLEARANCE AT LEAST		12" AROUND THE ENTIRE UNIT
GLYCOL MIXTURE, VOL%		40% GLYCOL AND 60% WATER

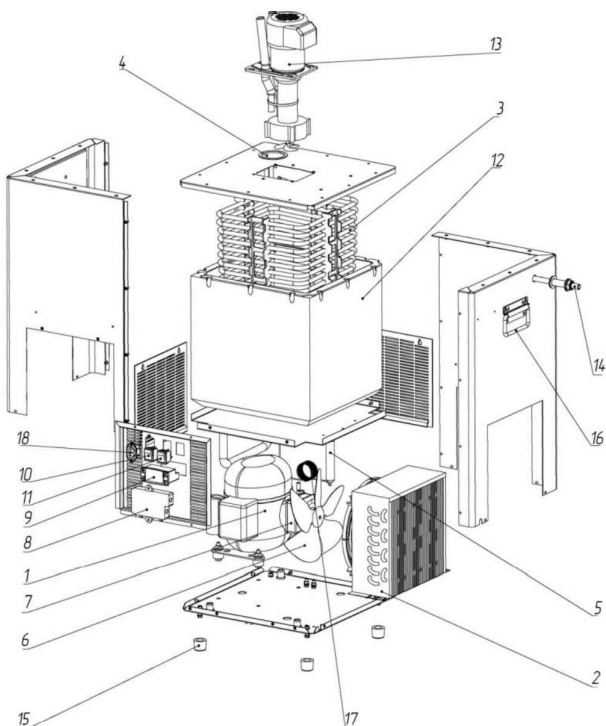
OVERALL DIMENSIONS



WIRING DIAGRAM



OVERALL DIMENSIONS



- 1 COMPRESSOR "TECUMSEH" AE4450Y-AA1A ASHRAE AZ (115V/60Hz) OR "EMBRACO" NEU 6212 Z (115-127 V/60Hz)
- 2 AIR CONDENSER "KARYER" STFT 14221
- 3 EVAPORATOR
- 4 CAP
- 5 FILTER-DRIER "BVB" GR 30- 6,1X2,5
- 6 IMPELLER Ø230 mm., $\alpha=28^\circ$
- 7 ELECTRIC MOTOR "ELCO" NU 9-20-2/094 (115V/50-60Hz) UL
- 8 TERMINAL BLOCK "ITW ELETTRGIBI " PA104
- 9 THERMOSTAT "DIXELL" XR02CX-4N0F1 (115 V/ 60Hz)
- 10 POWER SWITCH "ARCOLECTRIC" C6053ALBR (RED)
- 11 POWER SWITCH "ARCOLECTRIC" C6053ALBG (GREEN)
- 12 GLYCOL BATH
GLYCOL PUMP «FLUID-O-TECH» PA 2501 («PROCON» 102A080F11BA),
COVER TO THE PUMP «FLUID-O-TECH», SET UNION JOINT «FLUID-O-TECH»
48 YZ AND MOTOR "MARATHON" 5KH32FN5586MX (115V/60Hz)
- 14 OVERFLOW
- 15 FOOT
- 16 HANDLE
- 17 THROTTLE
- 18 CONNECTOR R302SN 250V 10A